

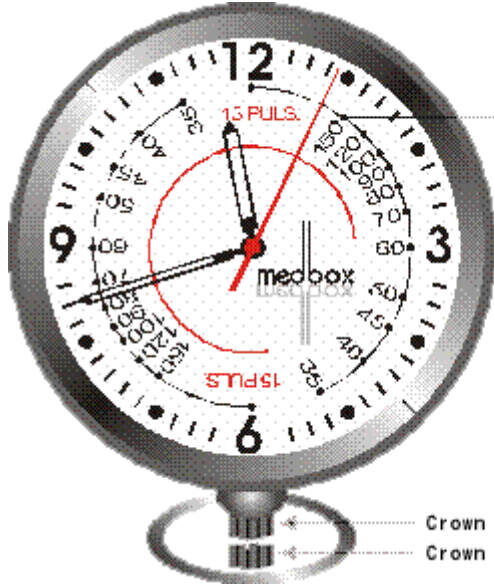


L W MediShop

Tel : (852) 2722 0772 Fax : (852) 3172 2129

Homepage : www.lwhk.com E-mail : info@lwhk.com

Nurse Watch 護士錶 夜光表面



Pulse range
35-150 per minute
for 15 pulse reading

Crown at normal position
Crown at 1st position

Checking the pulse :

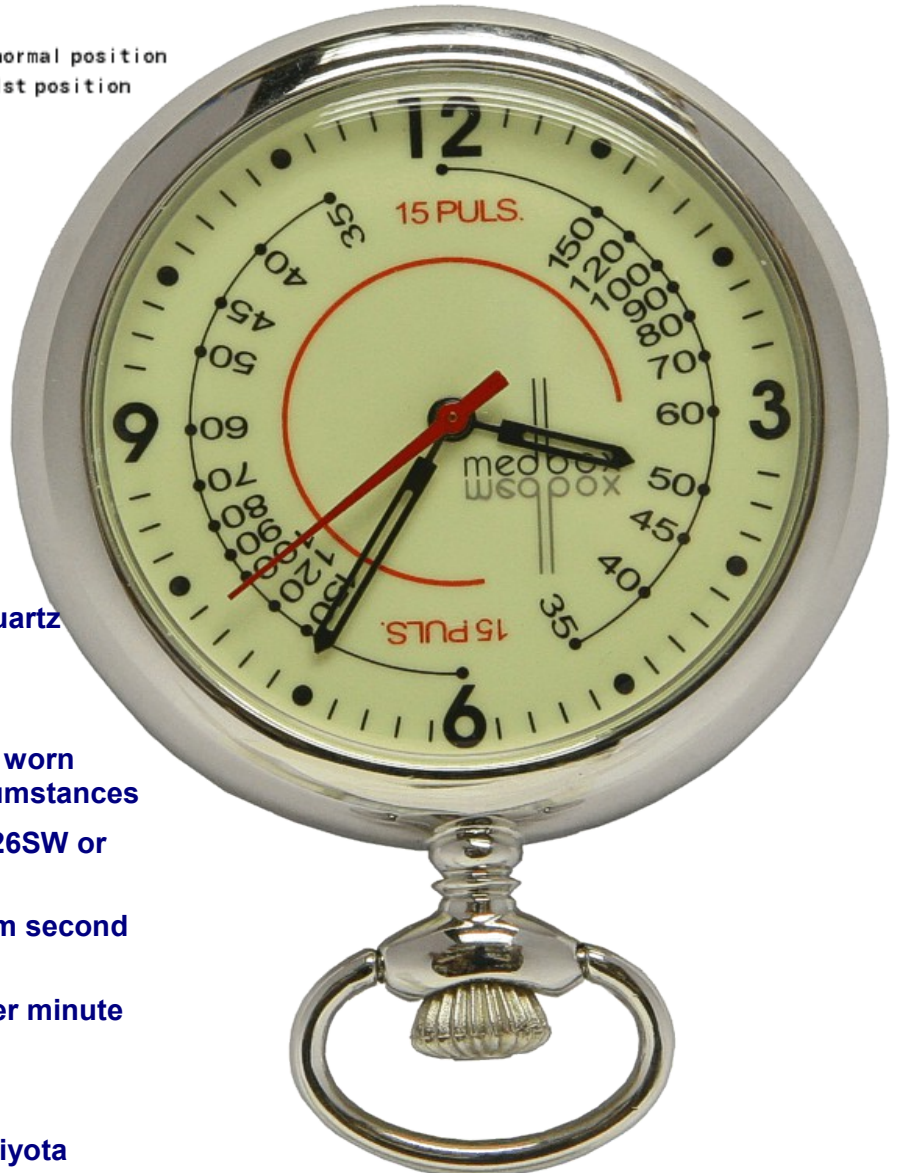
- ★Put your finger on the patient's wrist and feel your patient's pulse;
- ★When the second hand (red hand) of the nurse watch step at 12 or 6, count the patient's pulse for 15 pulses and then read the pulse reading on the watch (pulse reading start from 150 to 35);
- ★This reading is the patient's pulse per minute

Setting the time :

- ◆Pull the crown out to the 1st position.
- ◆Turn the crown to set hour and minute hands.
- ◆When the crown is pushed back to the normal position, second hand begins to run.

Specifications

Type of Quartz	: Tuning fork type quartz crystal
Frequency	: 32,768Hz
Accuracy	: 20 second / month worn under normal circumstances
Battery	: 1 silver oxide SR626SW or equivalent
Pulse Reading	: 15 pulses start from second hand at 12 or 6
Pulse Range	: 35 to 150 pulses per minute
Additional function	: Luminous dial
Movement	: Made in Japan (Miyota 2035)



The specifications might be changed without prior notice